

TITAN™

Commercial Gas Water Heater



- **Meets ASHRAE 90.1b-1992, and C.E.C. and New York Codes for thermal efficiency and standby loss.**
- **Glass-Lined Tank** – Exclusive corrosion protection with glass-lining. Multiple anodes provide corrosion protection.
- **Power Gas Burner** – Electronic flame monitoring with direct spark ignition. For added safety, all units are equipped with redundant gas valves. Power gas burner requires 120 volt 60Hz service. A **NEGATIVE DRAFT** is required in the vent piping. This is not a forced draft burner.
- **Fully Automatic Controls** – Safety shut off, high temperature limit control, dual thermostat (adjustable 120°F thru 180°F) for accurate temperature control. Maximum inlet gas pressure 14" W.C.
- **Foam Insulation** – Saves fuel, helps reduce standby heat loss.
- **Jacket** – made of heavy gauge steel with baked enamel finish over bonderized undercoat.
- **Fully Certified by U.L.**
- **ASME Construction** – Available on GPG81 140, GPG81 199, GPG81 270 & GPG81 370. When specifying ASME construction, add the letter "A" at the end of the model number. 160 psi working pressure.
- **A.G.A./ASME Rated Temperature & Pressure Relief Valve** – Factory installed.
- **Barometric Draft Damper** – To ensure proper draft for maximum efficiency.
- **Easy Cleaning** – Handhole cleanout(s) allows easy cleaning.
- **Professional Startup Service** – Furnished to assure most efficient combustion and safe initial operation.

CAUTION: Unit must be installed on non-combustible surface.

Limited Warranty:

■ Limited Warranty Outline

- If the tank should leak any time during the first three years, under the terms of the warranty, State Water Heaters will furnish a replacement heater; installation, labor, handling and local delivery extra.
- **NOTE: This Outline Is NOT A Warranty.** For complete information, consult the written warranty or State Water Heaters.

Other Features:

- Two layers of high temperature ceramic fiber insulation in combustion chamber
- Flame inspection port opening
- Mounted on rugged channel iron skids
- Multiple anodes for protection.

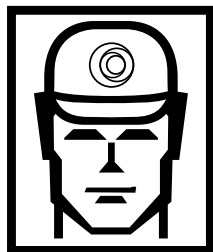
Options:

- Illinois School Code on GPG81 199 to GPG81 370
- National Board Registration (ASME models only)
- Low water cutoff
- 5 or 10 year extended limited warranty.
- ASME (ON SELECTED MODELS)



state WATER HEATERS 500 Lindahl Parkway, Ashland City, TN 37015 • www.stateind.com





TITAN™

Commercial Gas Water Heater

SPECIFICATIONS

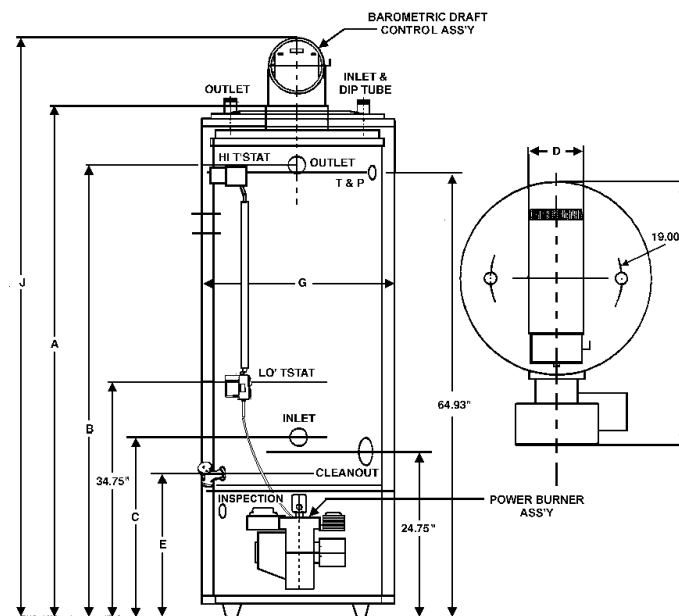
Model Number	Storage Capacity U.S. Gallons	Input Rating BTU/Hr. Nat./Propane Gas	Output (Gallons)				Dimensions In Inches								Gas Conn.	Approximate Shipping Wt. (lbs.)	Water Connections	
			First Hour Rating	Recovery			A	B	C	D	E	G	H	J			In	Out
				80°F Rise	100°F Rise	140°F Rise												
GPG 81 140NE	81	140,000	193	168	136	97	74¾	65	26¾	6	21½	27¾	38	85¼	½	556	1½	1½
GPG 81 140NEA	81	140,000	193	168	136	97	74¾	65	26¾	6	21½	27¾	38	85¼	½	658	1½	1½
GPG 81 199NE	81	199,000	250	238	193	138	74¾	65	26¾	6	21½	27¾	38	85¼	½	545	1½	1½
GPG 81 199NEA	81	199,000	250	238	193	138	74¾	65	26¾	6	21½	27¾	38	85¼	½	635	1½	1½
GPG 81 270NE	81	270,000	319	324	262	187	74¾	65	26¾	8	21½	27¾	38	85¼	¾	547	1½	1½
GPG 81 270NEA	81	270,000	319	324	262	187	74¾	65	26¾	8	21½	27¾	38	85¼	¾	632	1½	1½
GPG 81 370NE	81	370,000	416	444	359	256	74¾	65	26¾	8	21½	27¾	38	85¼	¾	634	1½	1½
GPG 81 370NEA	81	370,000	416	444	359	256	74¾	65	26¾	8	21½	27¾	38	85¼	¾	731	1½	1½

GPG models are available in both natural gas and propane (except for GPG 81 370 model which is natural only). To order propane, change the "N" to "P" in the model number. Example: GPG 81 140 PEA
Based on 80% thermal efficiency.

NOTE: To compensate for the effects of high altitude areas above 2000 feet, recovery capacities should be reduced approximately 4% for every 1000 feet above sea level.

Above capacities are based on actual efficiencies obtained in engineering laboratories.

ASME
(ON SELECTED MODELS)



GPG SUGGESTED SPECIFICATION

GENERAL

Water heater(s) shall be Model _____ as manufactured by State Water Heaters or equal. Water heater(s) shall be of glass-lined design and include a powered gas burner with redundant main gas valves, electronic ignition, automatic pilot gas valves, gas pressure regulator and flame inspection port. Heater(s) shall have an input rating of _____ and a recovery rating of _____ gph at a temperature rise of 100°F with a maximum storage capacity of _____. Heater(s) shall be equipped with 1½" NPT water inlet and outlet openings and (1) 4" handhole cleanout on Models GPG81-140 thru GPG81-270; (2) 4" handholes on ASME models. Heater(s) shall have a minimum working pressure of 160 psi and include a high temperature limit control, dual thermostat for accurate temperature control and factory installed A.G.A. T & P valve. Heater(s) shall be equipped with multiple anodes for protection, insulated with a vermin-proof glass fiber insulation and meet ASHRAE 90.1b-1990 for thermal efficiency and standby loss. The outer jacket shall have a baked enamel finish over a bonderized undercoating. All internal surfaces of the heater(s) exposed to water shall be glass-lined with an alkaline, borosilicate, nickelous oxide composition that has been fused to the steel by firing at a temperature range of 1400°F to 1600°F. Heater(s) tank shall have a 3 year limited warranty against corrosion as outlined in the written warranty.

CONTROLS: GPG81-140 thru GPG81-370

Controls shall include a Fenwal osi to provide direct spark ignition and flame monitoring. A prepurge of 30 seconds minimum shall be provided. A trial for ignition period of 5 seconds, after which if the flame is not proved or lost during the running cycle, the system will lock out. System shall include automatic gas valve, main gas pressure regulator, automatic gas shut-off, manual shut-off, and be rated for 14" W.C. maximum gas pressure.